



## Ex safety switch with separate actuator

Ex ES 98 ST-11

Material number: 1255734 (Material number old: 9100533001)

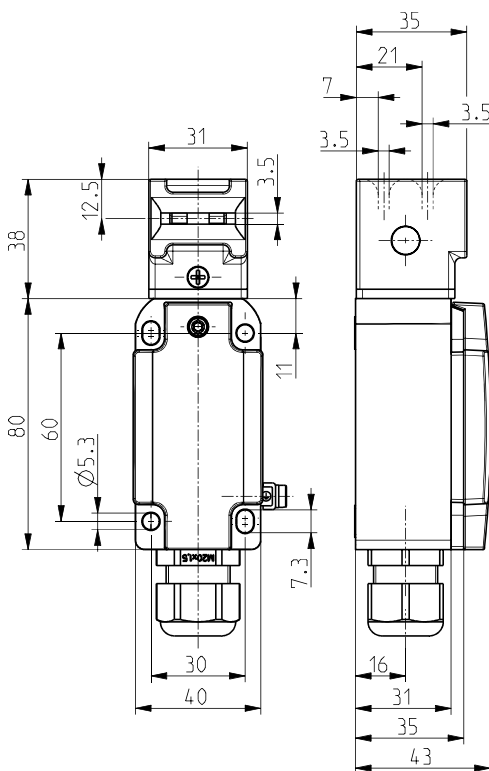
### Features/Options:

- Ex zone 1 and 21
- Metal enclosure
- Design to EN 50041

### Notes

- The actuator is not included in the delivery of the switches

### Dimensions



### Technical data

Applied standards	EN 60947-5-1, EN 60079-0, EN 60079-1, EN 60079-7, EN 60079-31, EN ISO 13849-1, EN ISO 14119
Enclosure	aluminium die-cast, corrosion-resistant, powder-coated, anthracite grey, similar to RAL 7016
Cover	stainless steel 1.4401, powder-coated, signal yellow, similar to RAL 1003
Sealing	silicone
Switch type	type 2
Coding level	low coding
Degree of protection	IP 66 to IEC/EN 60529
B <sub>10d</sub> (10 % load)	2 million
T <sub>M</sub>	max. 20 years
Switch insert	1 x Ex 95
Contact material	silver
Switching system	slow action, positive break NC contacts $\ominus$
Switching elements	1 NC/1 NO contact, type Zb
Connection	screw connection terminals
Cable cross-section	min. 0.2 mm <sup>2</sup> / AWG 24, max. 1.5 mm <sup>2</sup> / AWG 16
Cable entry	1 x M20 x 1.5 (incl. 1 cable gland)
Clamping range	7 ... 13 mm
Rated impulse withstand voltage U <sub>imp</sub>	4 kV
Rated insulation voltage U <sub>i</sub>	250 V

Errors and omissions excepted.








## Ex safety switch with separate actuator

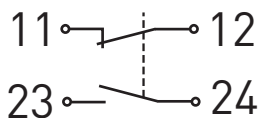
Ex ES 98 ST-11

Material number: 1255734 (Material number old: 9100533001)

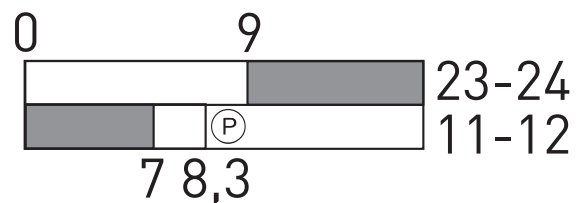
### Technical data

Conventional thermal current $I_{the}$	6 A
Rated operating current/voltage $I_e/U_e$	6 A/250 VAC; 0.25 A/230 VDC
Utilisation category	AC-15; DC-13
Short-circuit protection	6 A gG/gN fuse
Ambient temperature	T6: -20 °C ... +40 °C; T5: -20 °C ... +60 °C
Mechanical life	> 1 million operations
Operation cycles	max. 1800/h
Impact energy	max. 7 J
Ex marking	<p>⊕ II 2G Ex db eb IIC T6/T5 Gb,  ⊕ II 2D Ex tb IIIC  T80°C/T95°C Db  IECEX Ex db eb IIC T6/T5 Gb,  Ex tb IIIC T80°C/T95°C Db</p>
Approvals	<p>DMT 01 ATEX E 178  IECEX BVS 07.0014</p> <p>      </p>
Weight	360 g

### Contact diagram



### Switching diagram



Ⓟ Positive break travel/angle

Note  
Inserted position of actuator = 0 in switching diagram.  
The actuator is not included with the switches.